

diabetes *free* sc

diabetesfreesc.org

Annual Meeting
November 15, 2024



South Carolina
FOUNDATION

diabetes *free* sc

Planning Committee

Ankoma Anderson, PhD

Michelle Harris, MFA

Rhonda Hill, PhD

Misti Leyva, PhD, RD

Joye Louis, MPH

Timothy Lyons, MD

Christine Scaplen, BA

Makala Smith, RD, CDCES



South Carolina
FOUNDATION

diabetes *free* sc



Shawn Stinson, MD



Erika Kirby, MBA

diabetes *free* sc



Timothy Lyons, MD
*Exec. Medical
Director*



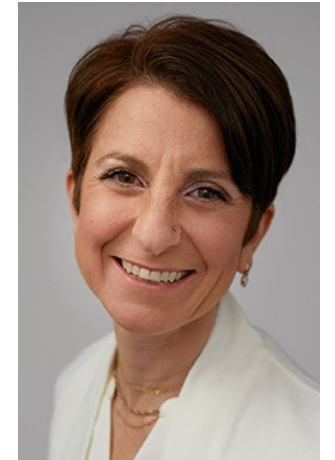
Noreen O'Donnell,
MSW
Program Director



Misti Leyva, RD,
PhD
Strategist



Arthur Fu, MD, PhD
Data Scientist



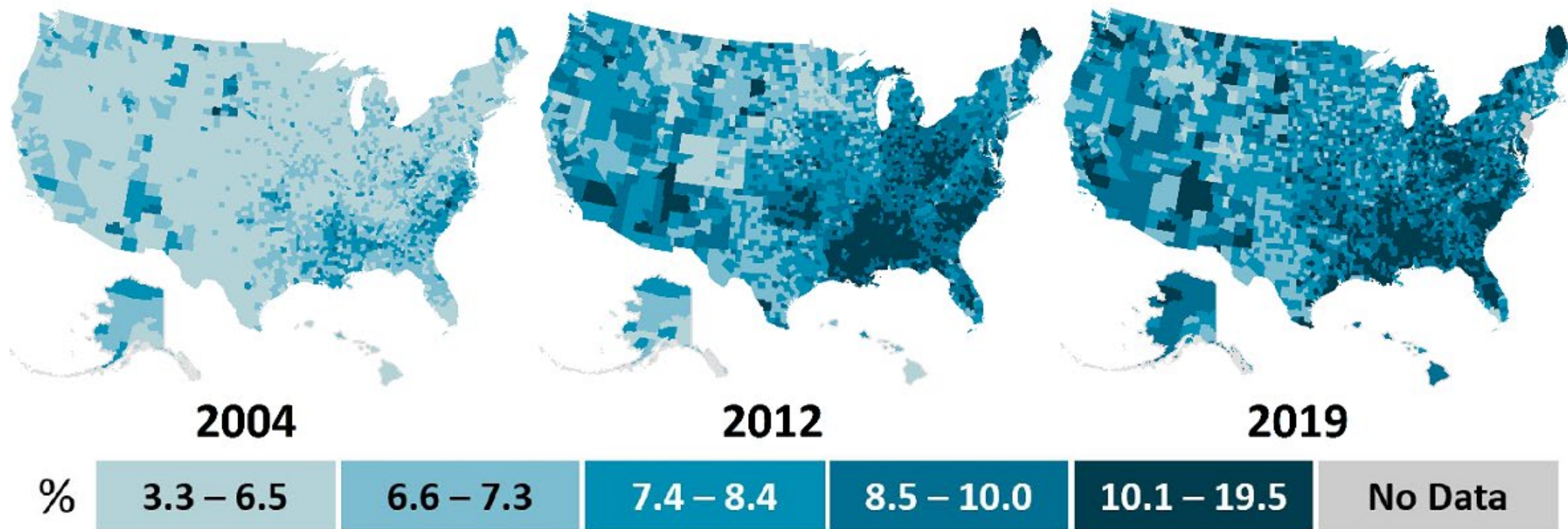
Christine Scaplen, BA
*Communications
Specialist*



South Carolina
FOUNDATION

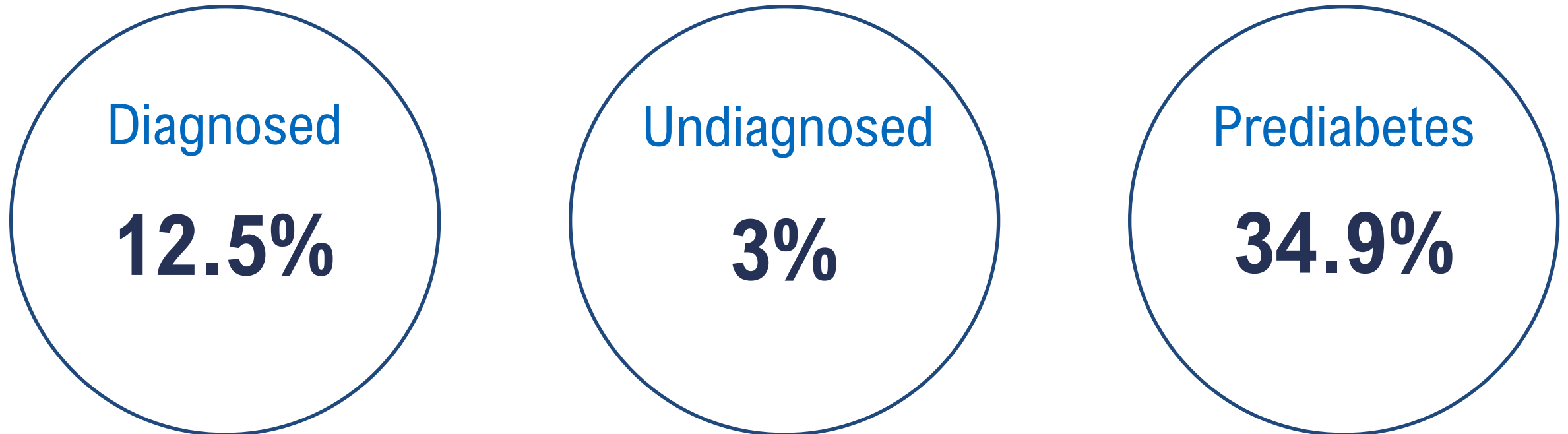
diabetes *free* sc

Age-adjusted, county-level prevalence of diagnosed diabetes among adults aged 20 years or older, United States, 2004, 2012, and 2019



US Diabetes Surveillance System; Behavioral Risk Factor Surveillance System

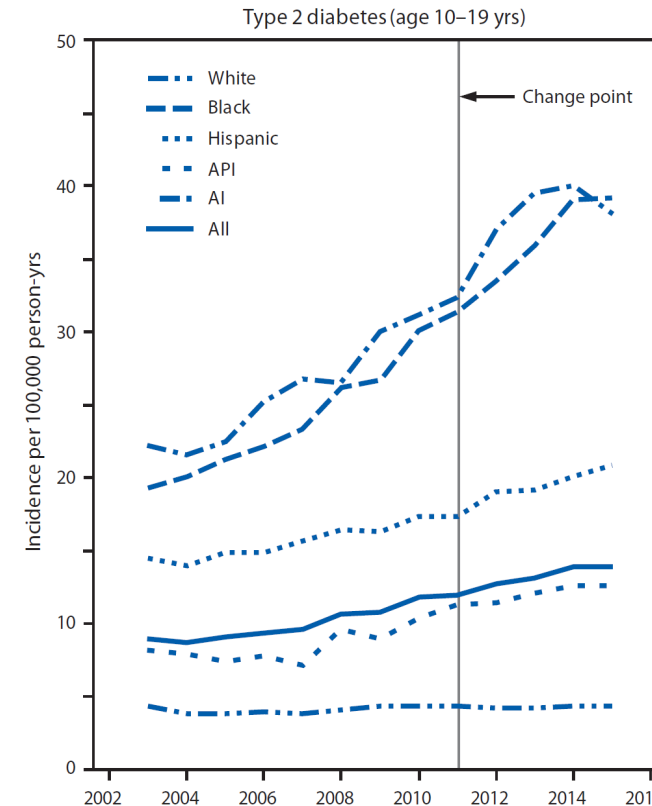
Diabetes in South Carolina



Over half of South Carolinians are living with diabetes or prediabetes

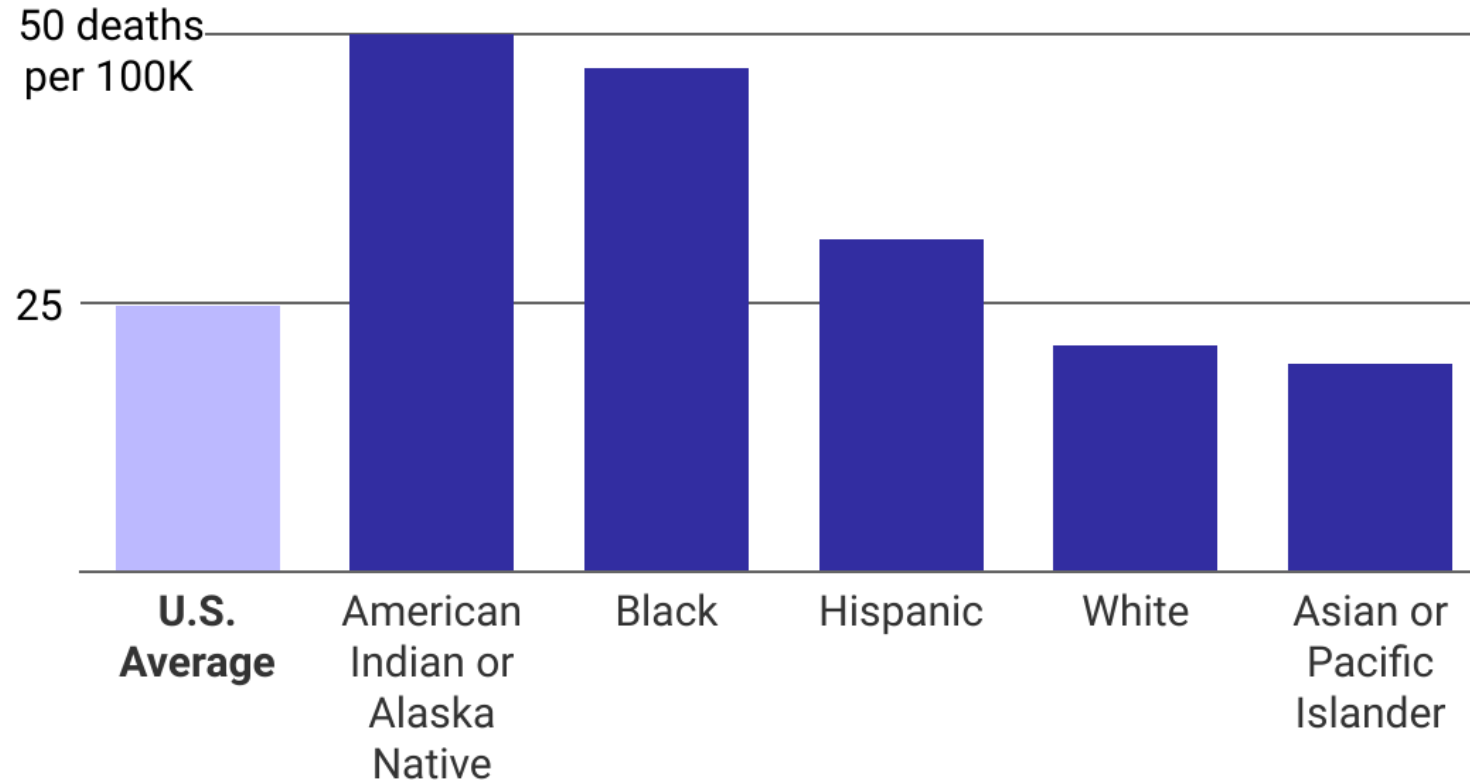
Equity, Early Intervention, Statewide Reach

Type 2 diabetes has risen dramatically among Black, American Indian and Hispanic teenagers



SEARCH Study. Divers et al. MMWR 69:161-165, 2020

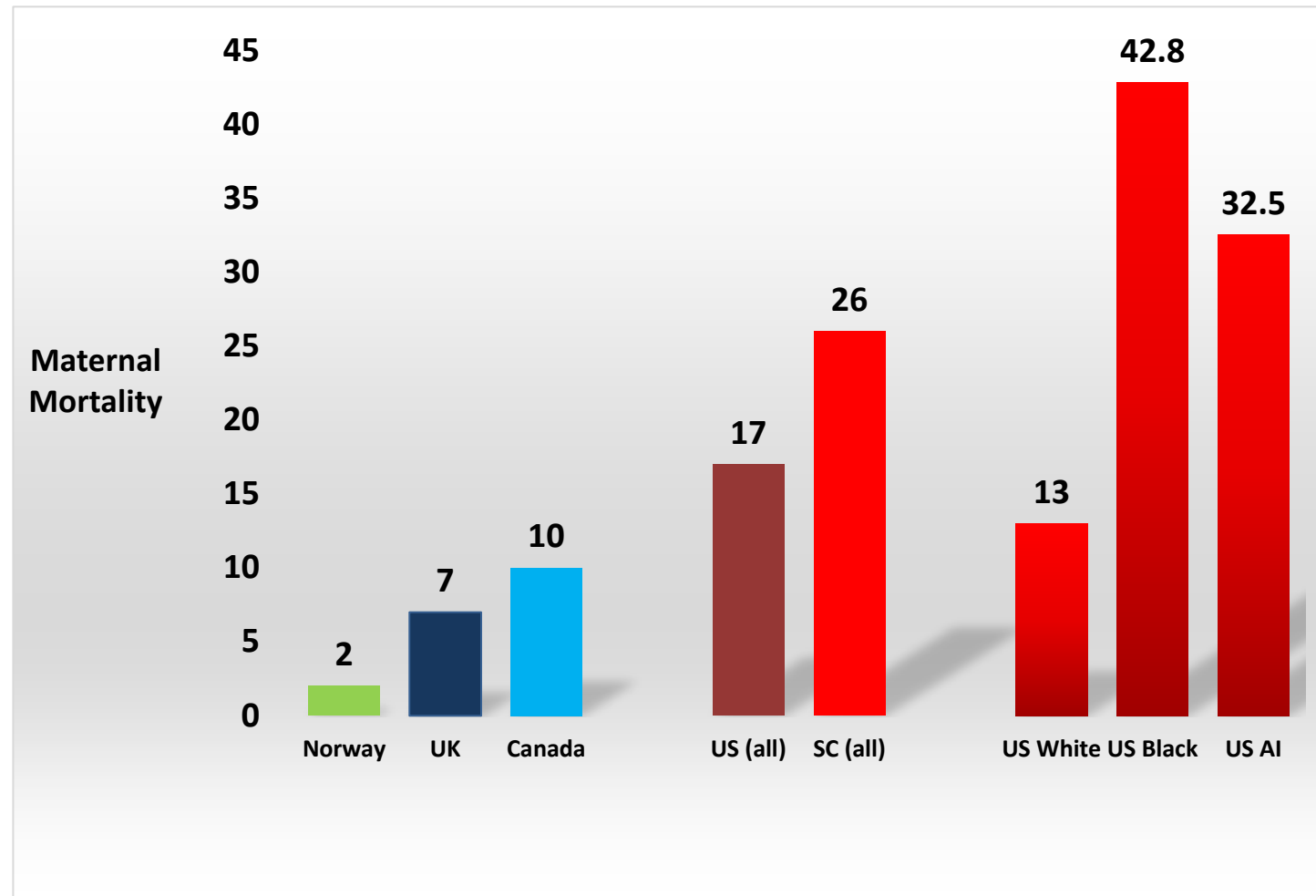
Indigenous and Black Americans have highest diabetes death rates



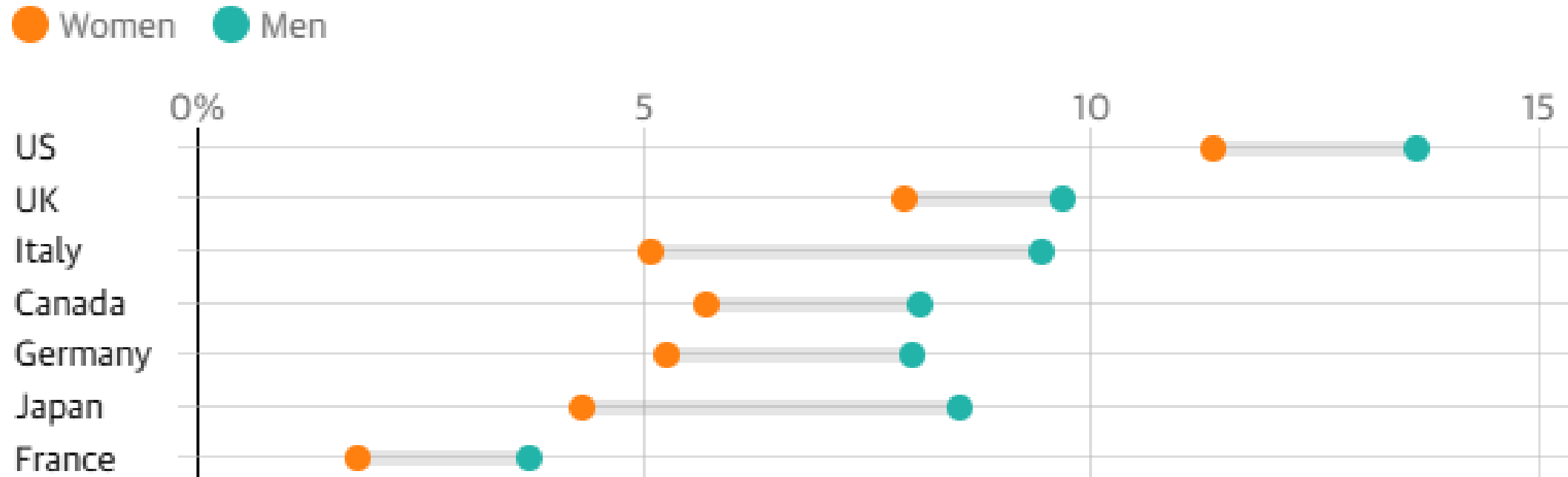
Data source: Kaiser Family Foundation analysis of CDC data from 2020

Maternal Diabetes Doubles or Triples the Risk of All Adverse Birth Outcomes

The human and financial consequences persist for decades for baby, mother, family, society



Percentage of Adults with Diabetes, G7 Countries, 2022



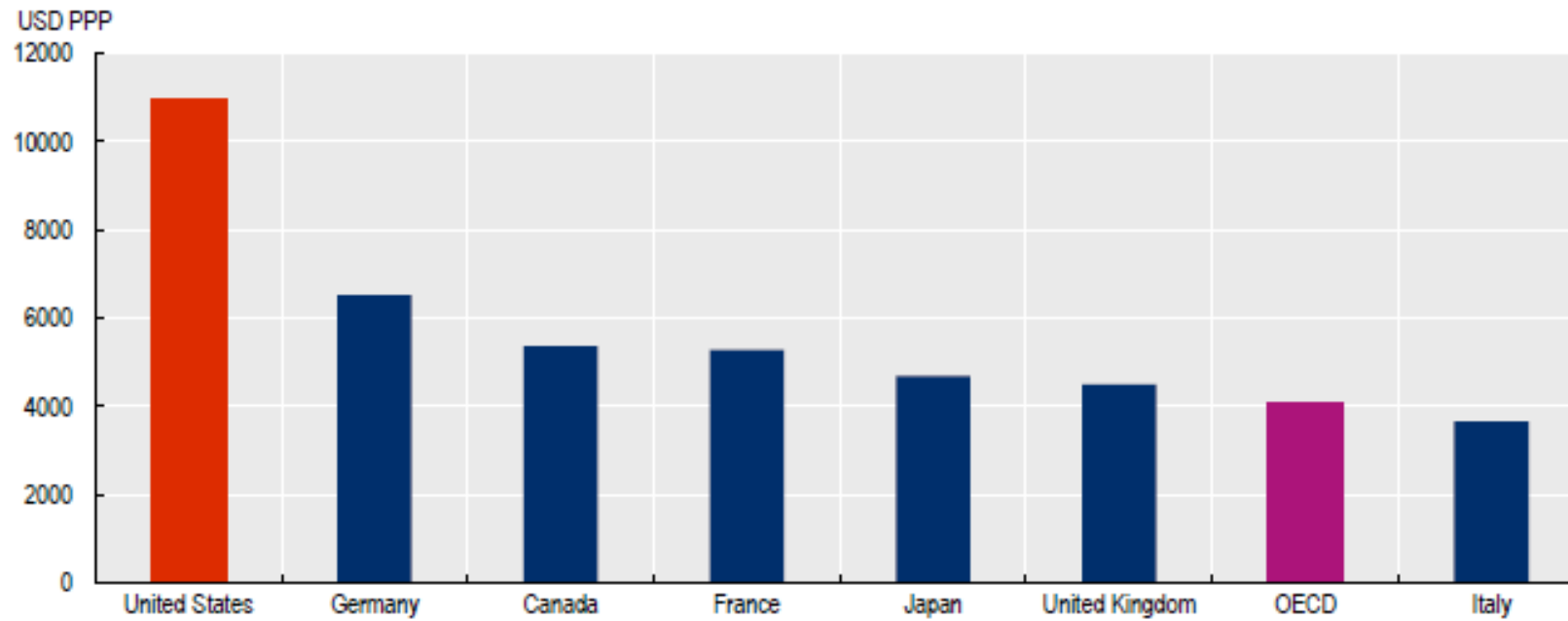
Non-Communicable Disease Risk Factor Collaboration, Lancet

Some Health Outcomes, G7 countries, 2021

| | Effective cancer care | | Effective primary care | |
|----------------|---|---|--|---|
| | Breast cancer survival (Age-standardised five-year net survival percentage) | | Avoidable diabetes admissions (per 100 000 people, age-sex standardised) | |
| OECD | 84.3 | | 127 | |
| Canada | 88.6 | ⊙ | 96 | ⊙ |
| France | 86.7 | ⊙ | 151 | ⊙ |
| Germany | 86.0 | ⊙ | 206 | ⊙ |
| Italy | 86.0 | ⊙ | 41 | ☑ |
| Japan | 89.4 | ☑ | | |
| United Kingdom | 85.6 | ⊙ | 81 | ⊙ |
| United States | 90.2 | ☑ | 226 | ☒ |

Source: OECD Health at a Glance 2021, <https://doi.org/10.1787/ae3016b9-en>.

Per Capita Health Spending, G7 countries, 2019



(Administrative costs are 8-fold higher in US)

Diabetes Free SC, 2020-present

Vision

Winning the fight against diabetes

Mission

To align and advocate for actions against diabetes -
engaging South Carolinians to lead healthier lives

Diabetes Free SC, Guiding Principles

- Alignment (Connections, Communications)
- Health equity
- Data/outcome analysis
- Sustainability
- Early intervention (early in life; early in disease)
- Statewide reach

Diabetes Free SC, Strategic Directions

To improve pregnancy outcomes and the health of women with or at risk for diabetes

To reduce lifelong risk of diabetes in children

To prevent diabetes and its complications in adults

Connections for a Diabetes-Free South Carolina



South Carolina
FOUNDATION



Essential Connections:

- Multidisciplinary Teams
- Implementation of Existing Knowledge
- Pyramid of Care
- Statewide Cohesion
- Whole person, whole community approach: physical, mental, and spiritual health
- Efficient, Excellent Healthcare, not Wasteful Mediocrity

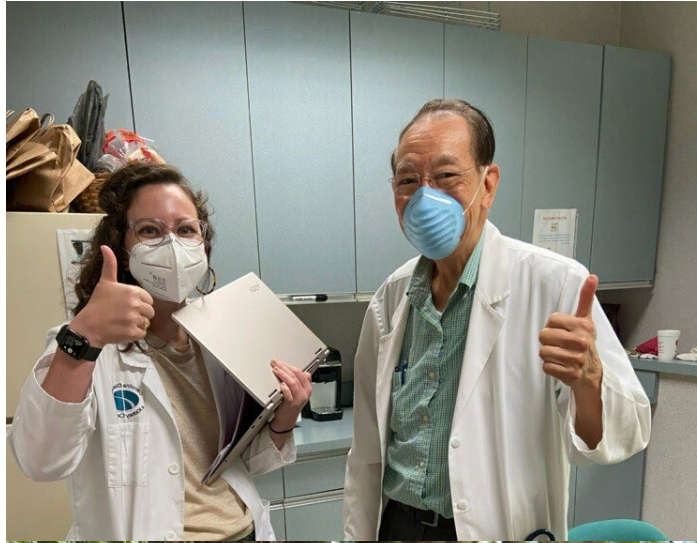


South Carolina
FOUNDATION

diabetes *free* sc

Multidisciplinary Teams

2020

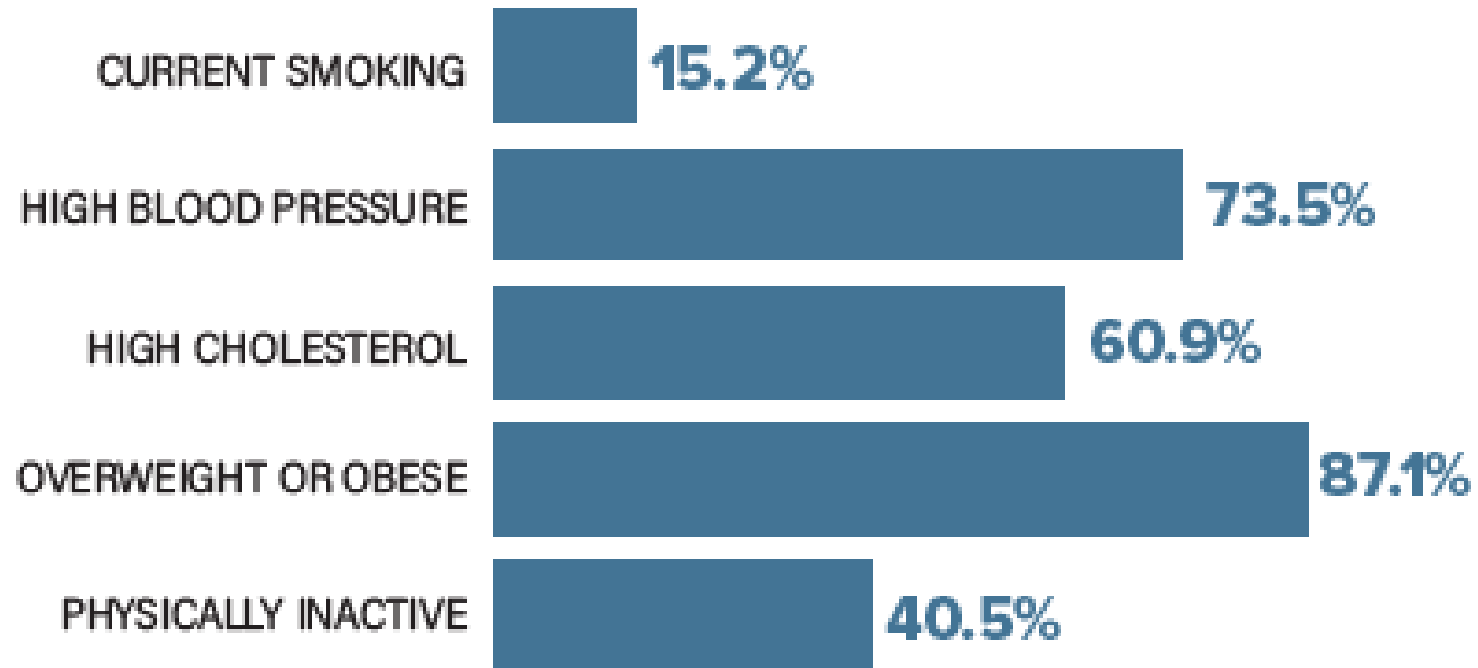


2024



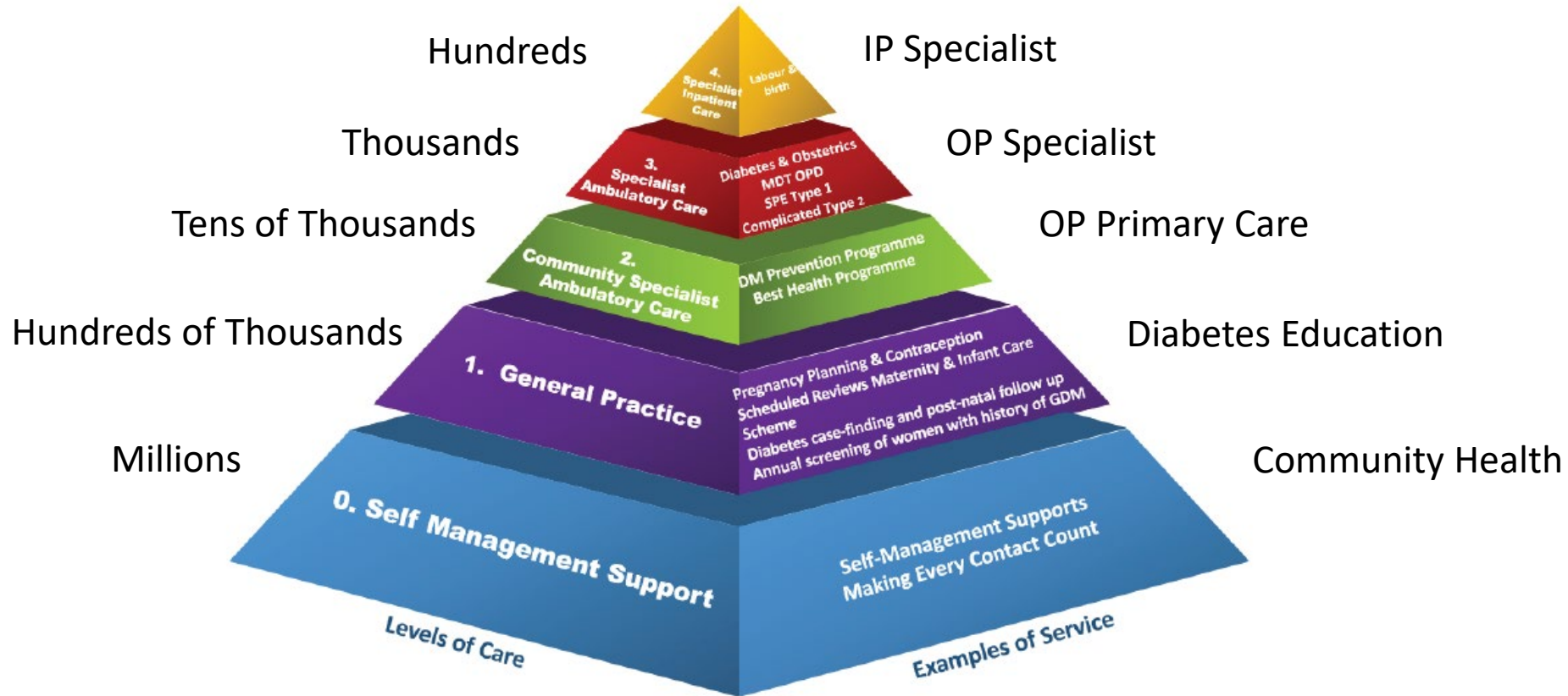
Other health concerns

AMONG THOSE WITH DIABETES



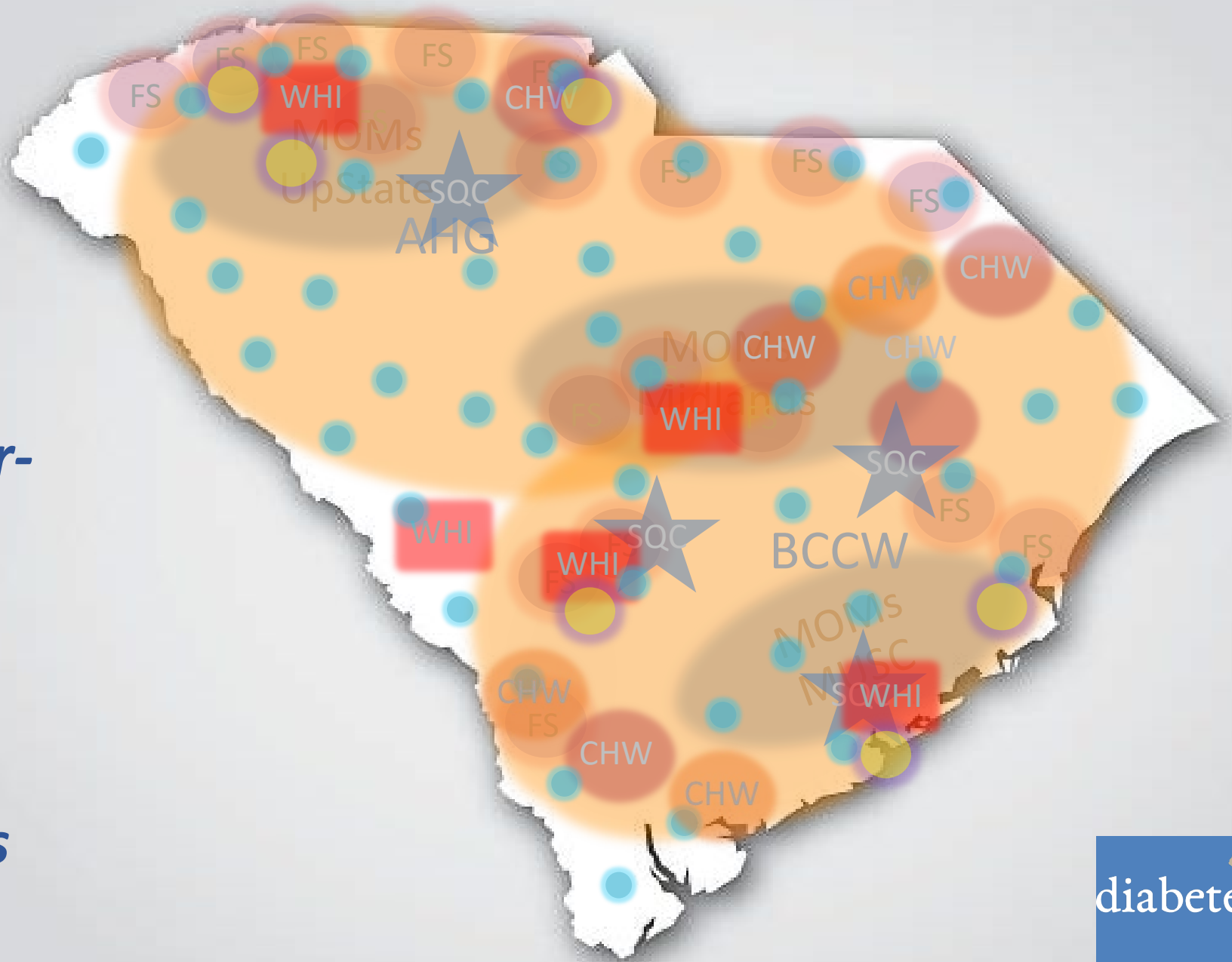
The “Pyramid of Care”

Every level working to top of skills



***Statewide
Cohesion:***

***Aim for a
statewide, inter-
disciplinary
interactive
collaborative
program to
defeat diabetes***



Equity, Whole person, Whole community

“Tragically, little progress has been made in addressing racial and ethnic inequities in health care: movement has been slow, uneven and inconsistent”

“The US health care system has failed to adopt or bring to scale many of the evidence-based solutions for improving health....”

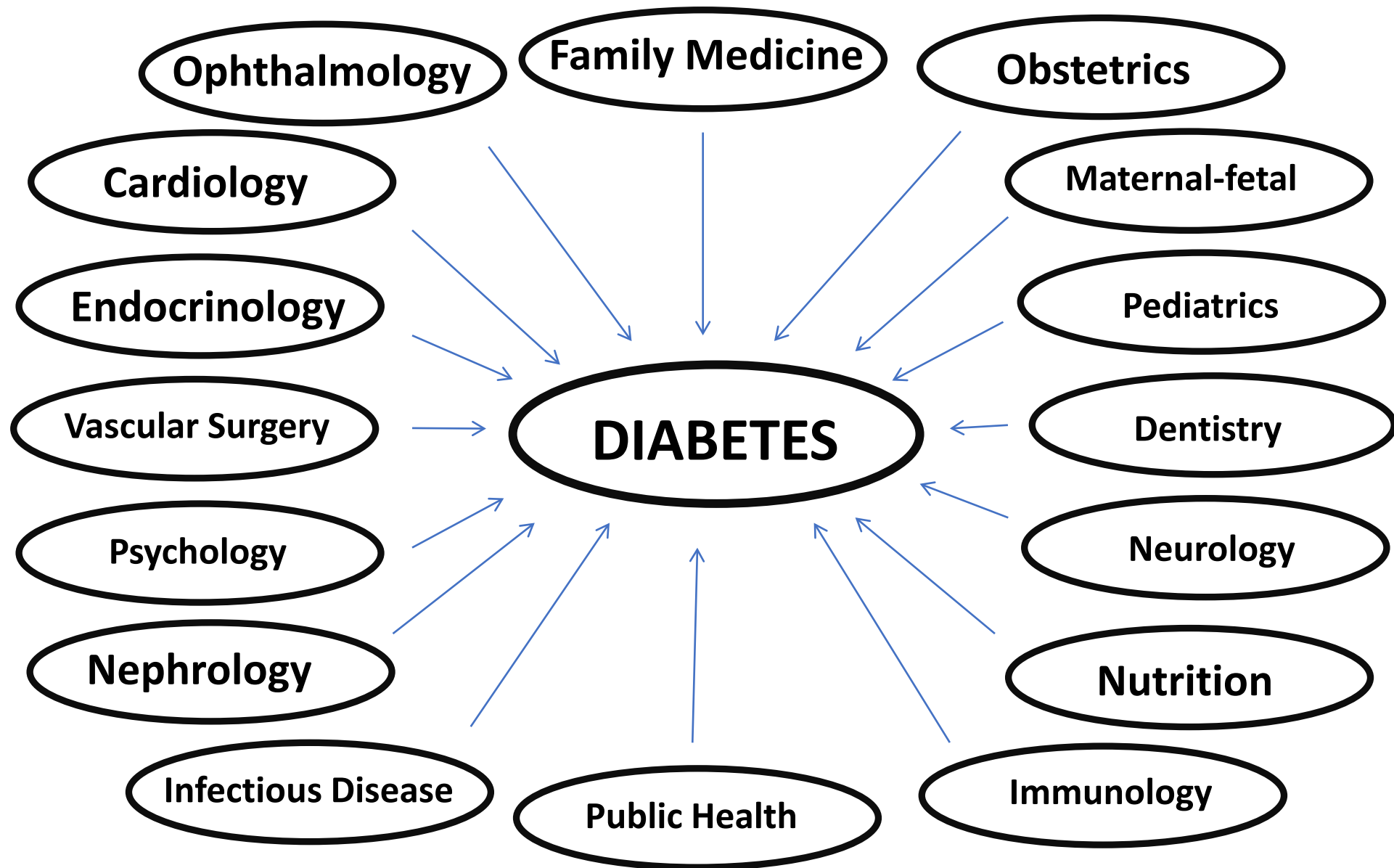
Benjamin GC et al. J Am Med Soc. 332:1143, October 2024

“Failure to **elicit the patient’s story** and benefit from the clinical discoveries and human connections these stories can foster results in immeasurable suffering and excess health care costs”

Schillinger DD. Telltale Hearts. BBS Publications, New York, 2024.

Efficient, Excellent Healthcare, not Wasteful Mediocrity

- Alignment (Connections, Communications)
 - Health equity
 - Data/outcome analysis
 - Sustainability
 - Early intervention (early in life; early in disease)
 - Statewide reach: Pyramid of Care
-



Policy, Education, Equity and Disparities, Teamwork

“The problem with communication is the assumption that it has occurred”

George Bernard Shaw

DFSC: Future Strategy

- Sustain, develop, integrate meritorious current programs
- Ensure accountability, meaningful outcome metrics
- New investments to align, connect, complement
- Maintain focus on Guiding Principles and Strategic Directions
- Community Engagement: A Faith-Based Initiative
- College, University, HBCU Initiative

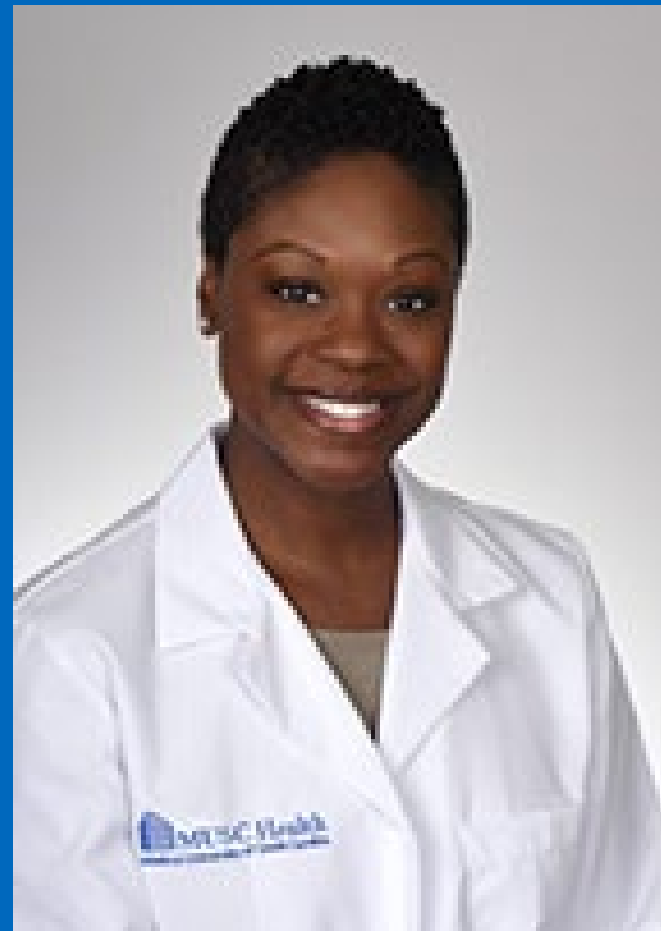
diabetes *free* sc

Thank you!



Aundrea Loftley, MD

Keynote Speaker



South Carolina
FOUNDATION

diabetes *free* sc

